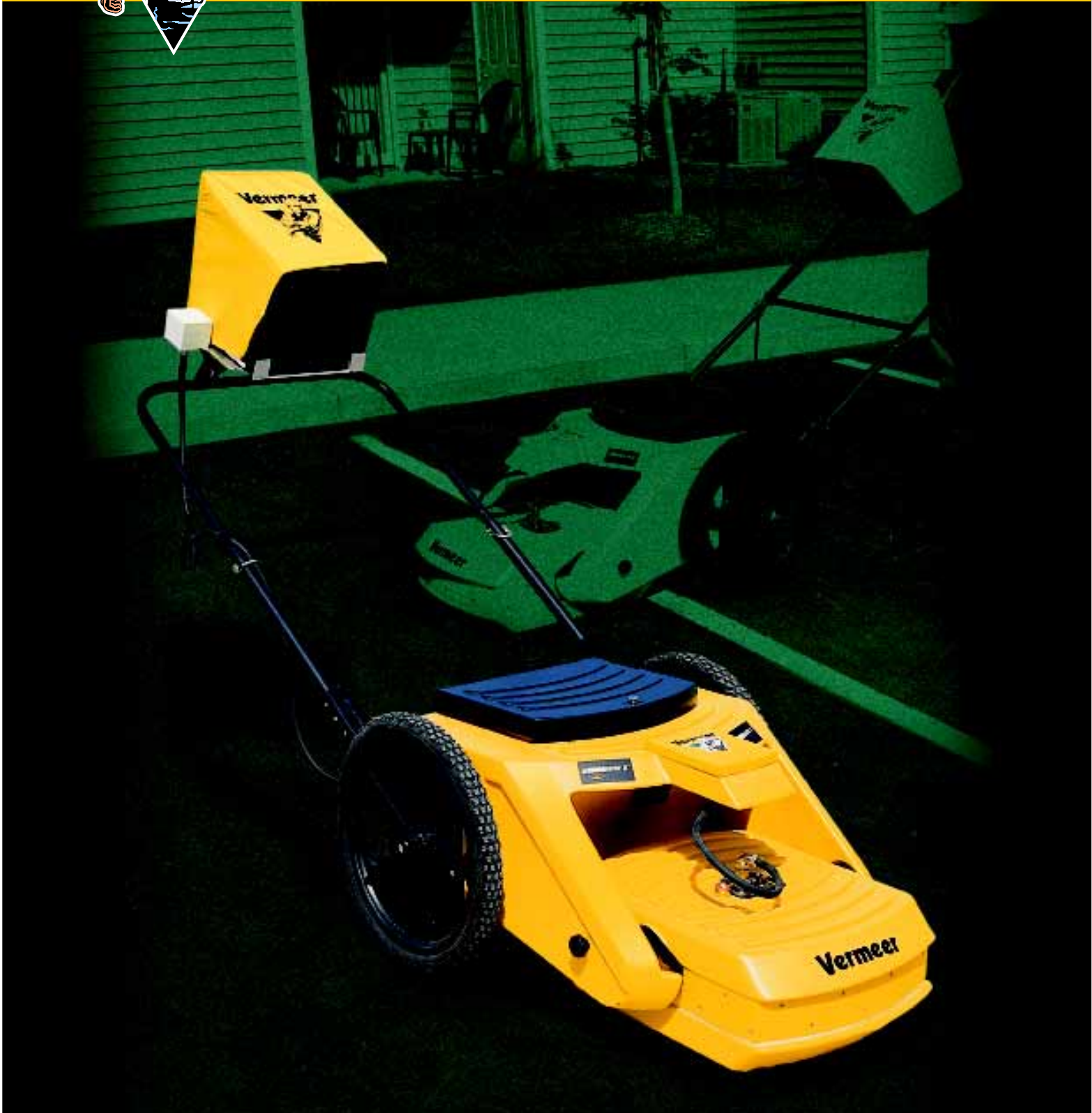


**GROUND-PENETRATING
RADAR**

Vermeer



INTERRAGATOR[®] II



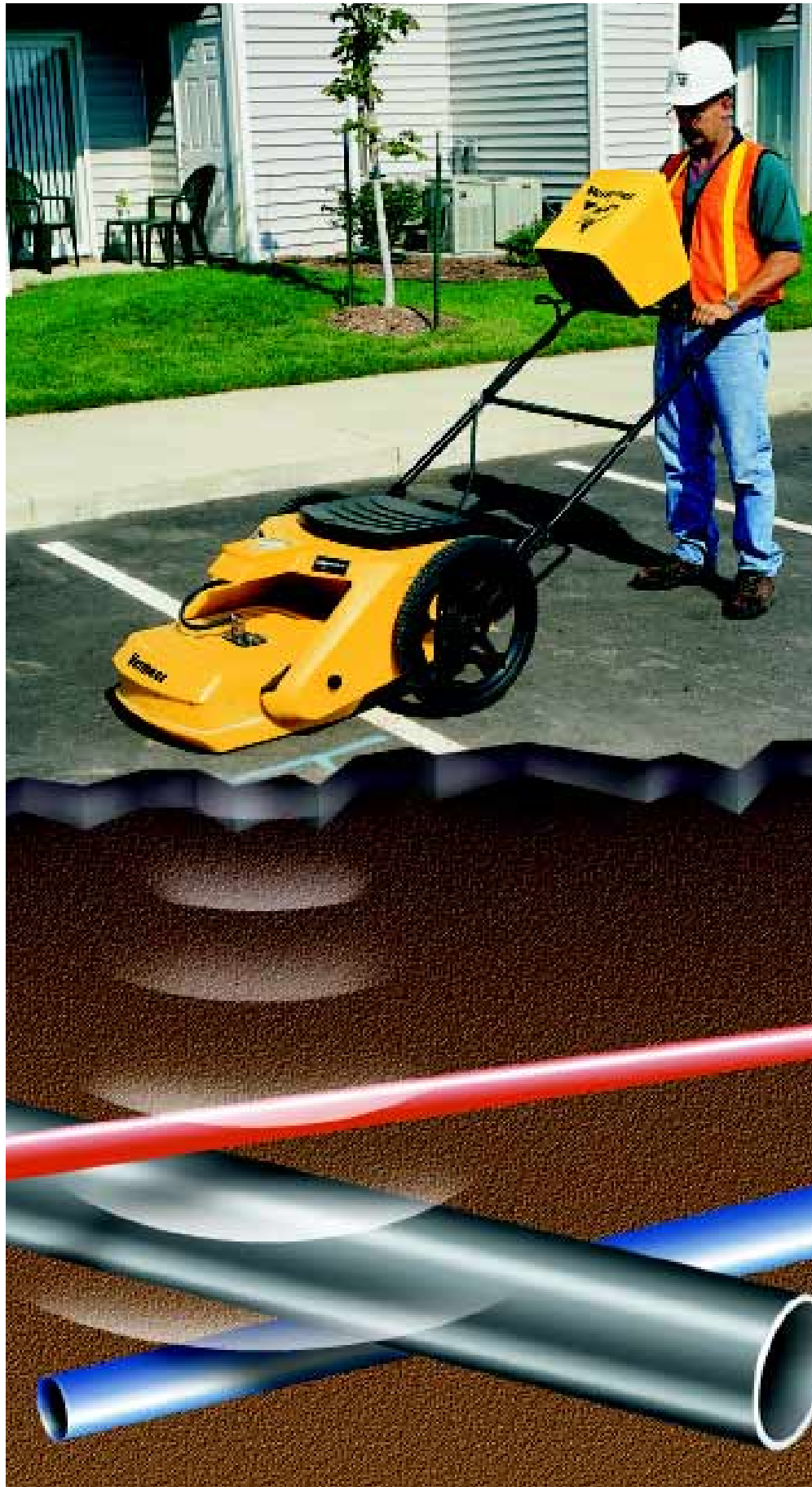
Vermeer®

INTERRAGATOR® II

An Easier Way To Locate Metal And Plastics

The new INTERRAGATOR II GPR system offers the latest advancements in underground surveying for detecting plastic, cast-iron, asbestos-over-concrete, clay, metal and other types of utilities.

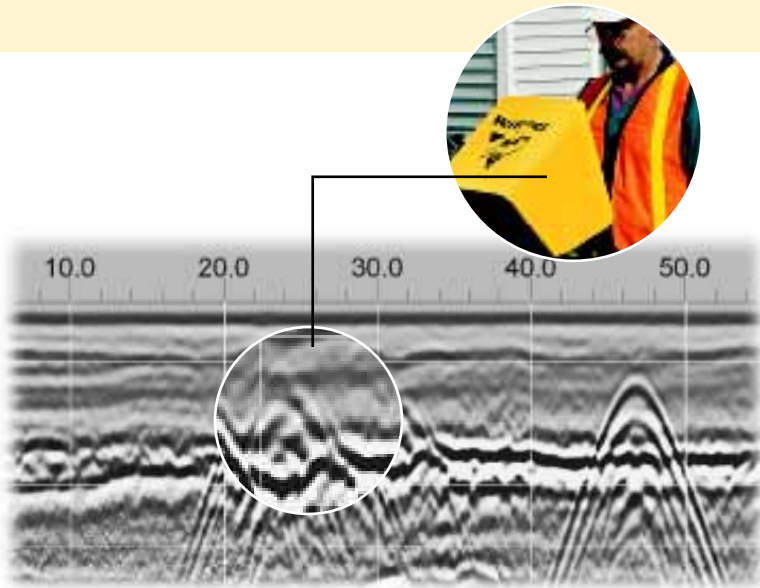
Designed for use by contractors, municipalities and utility-locating services, the INTERRAGATOR II system can be used to scan a site before bidding or starting a horizontal directional drilling, trenching or other construction project. The INTERRAGATOR II system can be used for identifying bedrock and water-table depths or in conjunction with conventional locating and potholing techniques to assist in identifying underground metallic and nonmetallic pipes and cables down to 25' (7.6 m) deep (depending on soil conditions).



Get A Clear Underground Picture.

Data collection with the INTERRAGATOR II

is as simple as pushing a button and moving the unit along the survey path. Survey results are displayed onscreen in real-time. The reverse cursor lets the operator mark utility location without having to use a measuring tape. The depth calibration function allows you to calibrate depth readings for your job site soil conditions. Start by entering the depth range and soil type, then the INTERRAGATOR II system automatically adjusts to ensure proper data collection.



The INTERRAGATOR II system features a rugged field computer that allows surveying in harsh environments. With a Pentium II processor and a six GB hard drive, this system allows quick operation and plenty of memory capacity.



The INTERRAGATOR II system is compatible with ATLAS BORE PLANNER® software, allowing utility information to be electronically uploaded to the bore-planning software. Optional radan software allows post-processing of GPR data in the field or office.

INTERRAGATOR II Specifications

General

Dimensions: 21" (53 cm) high (without handle; w/ handle height is adjustable) x 44" (112 cm) long (without handle; 83" [211 cm] w/ handle) x 31" (79 cm) wide
Weight: 82 lbs. (37 kg)

Operational

Temperature: 41° – 113° F (5° – 45° C) operating; -4° – 140° F (-20° – 60° C) storage
Humidity: 10% to 90% RH (noncondensing)
Environmental: Radar control unit is environmentally sealed; can be used in inclement weather
Survey speed: Up to 5 mph (8 kmph)

Hardware

Processor: Intel Mobile Pentium II (300 Mhz)
Display: 10.4" (26.4 cm) 256 active matrix bright color LCD display, 800 x 600 pixels, 10-bit touch screen
Memory: 64 MB RAM
Hard drive: 6.4 GB hard drive
Inputs/outputs: Antenna input (survey wheel, marker switch); printer output, file of target locations for use with ATLAS BORE PLANNER
Power: 12-volt DC rechargeable batteries, 3 – 4 hours of life depending on conditions
Printer: Optional thermal plotter, printing via serial port

Software

OS: Windows NT
Data collection modes: Survey wheel mode — provides horizontal positioning of data; user input of horizontal reference marks
Display mode: User-selected; color/gray scale line scan
Range gain: Automatic; range gain prior to digitization for maximum system dynamic range
Filters: Automatic vertical and horizontal filtering in real time
Scan rate: Automatic, 50 scans per meter
Sampling: Automatic, 512 samples/scan
Range: User-selected, 1' (.3 m) to 25' (7.6 m)
Data transfer: Floppy disk or through serial port to PC

Antenna

Antenna: INTERRAGATOR II 300 MHz antenna
Pulse width: 3.3 ns
Dimensions: 24" x 18" x 9" (61 cm x 46 cm x 23 cm)
Weight: 26 lbs. (12 kg)



Vermeer Manufacturing Company

1210 Vermeer Road East
P.O. Box 200
Pella, Iowa 50219 U.S.A.
Phone: (641) 628-3141
Fax: (641) 621-7734
International fax: +1 (641) 621-7730
www.vermeer.com

Call toll-free 1-888-VERMEER

1-888-837-6337 (U.S.A. only)

Europe, Middle East and Africa

P.O. Box 323
4460 AS Goes
Netherlands
Phone: +31 113 272700
Fax: +31 113 272727

Vermeer Manufacturing Company reserves the right to make changes in engineering, design and specifications; add improvements; or discontinue manufacture at any time without notice or obligation.
VERMEER, VERMEER LOGO and ATLAS BORE PLANNER are registered trademarks of Vermeer Manufacturing Company in the U.S. and/or other countries.
INTERRAGATOR is a trademark of Vermeer Manufacturing Company. WINDOWS is a trademark of Microsoft, Inc. PENTIUM is a trademark of Intel.

Copyright © 2002 Vermeer Manufacturing Company
All Rights Reserved